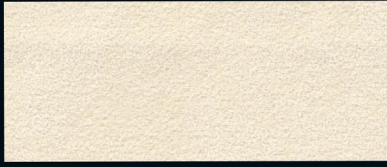


**AUTOMOTIVE**

**EXO  
SOFT  
MULTILAYER  
PANNEL  
COVER.**

**ALCANTARA**



**2911** perlweiß



**1125 (2970)** karamell



**1510** perlrosa



**2984** helios



**2940** moccasin



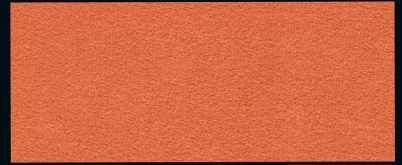
**1108** sand rose



**2901** champignon



**4914** sienna



**2969** mango



**2909** natur hell



**2930** haselnuß



**4996** rot



**1110** amber glow



**4097** rust



**2916** rubin



**2974** java



**2910** schoko



**9076** weinrot



**1112 (2920)** pergament



**6833** raw amber



**9036** aubergine



**9500** dunkelbraun

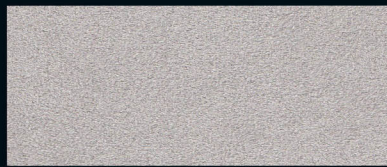


**9008** brombeer





**2932** mausgrau



**4978** silbergrau hell



**2938** basalt



**4175** hellblau



**2934** oriongrau



**2942** sandgrau



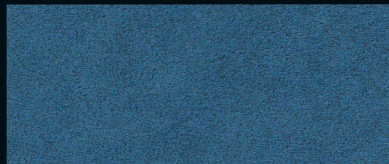
**9022** tobago



**1452 (2951)** lemongelb



**2957** schiefer



**7586** kobalt



**9073** smaragd



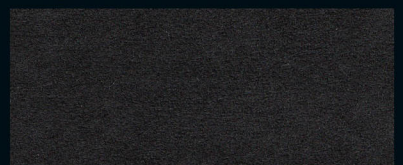
**9052** dunkelgrau



**6408 (9055)** signalblau



**6406** tiefgrün



**9002** schwarz **9002SOFT\***



**9041** stahlblau



**9980** tiefblau



**9040** tiefschwarz **9040SOFT\***



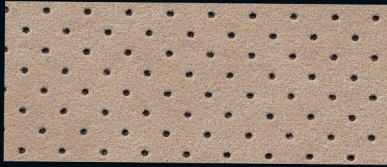
**\* mit 3 mm Schaumkaschierung / with 3mm foam lamination**

Alle nicht perforierten Farben sind in den Qualitäten cover und pannel lieferbar.

All non perforated colours are deliverable in cover and pannel.

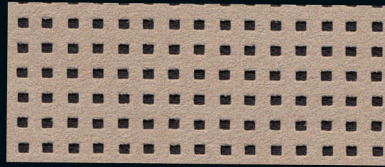


Lochperforation/  
Round perforation



**2974.B1** java

Kästchenperforation/  
Square perforation

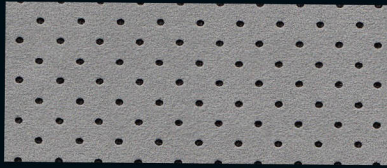


**2974.S2** java

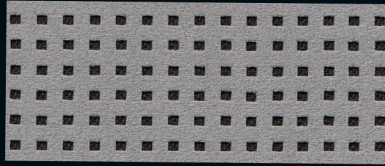
Starlite/  
Round perforation



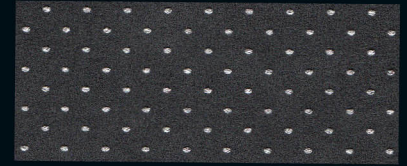
**4978.STL** silbergrau hell



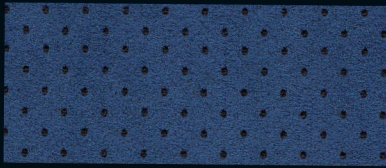
**2934.B1** oriongrau



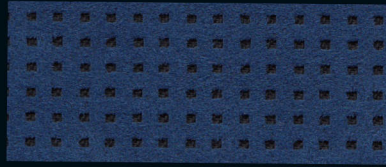
**2934.S2** oriongrau



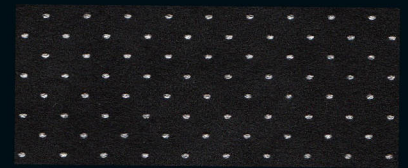
**9052.STL** dunkelgrau



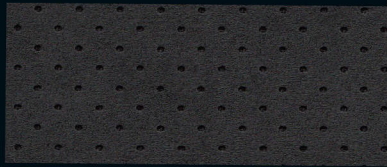
**6408.B1** signalblau



**6408.S2** signalblau



**9040.STL** tiefschwarz



**9002.B1** schwarz



**9002.S2** schwarz

## Alcantara® Multilayer



**0440ML** linen



**7200ML** brunel



**8500ML** imperial blue



**1400ML** camel



**7000ML** cumbrian green



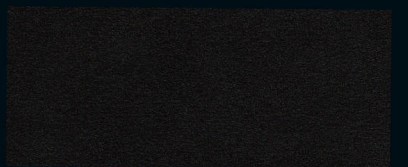
**8800ML** burnt oak



**3880ML** saddle



**4220ML** porpoise



**9040ML** tiefschwarz



## Wasserlösliche Flecken

Zur Reinigung von Alcantara® wird empfohlen, die dafür vorgesehenen Produkte zu verwenden, deren Liste Sie auf der Website [www.alcantara.com](http://www.alcantara.com) unter „Wartung“ finden. Sollten diese Produkte nicht zur Verfügung stehen, wird je nach Fall die Verwendung von Wasser, Zitronensaft oder reinem Ethylalkohol (Weingeist) empfohlen. Die diesbezüglichen Reinigungsverfahren sind nachstehend beschrieben. Für weitere Informationen besuchen sie bitte unsere Website unter [www.alcantara.com](http://www.alcantara.com)

## Water-soluble stains

It is recommended that you use the specific products for Alcantara® cleaning, a list of which is available on [www.alcantara.com](http://www.alcantara.com) in the section maintenance; if they are not at your disposal, it is recommended, depending on the type of stain, that you should use water, lemon juice, or pure ethyl alcohol (from liquors) and follow the instructions below. For further information visit our web site [www.alcantara.com](http://www.alcantara.com)

## Tâches solubles dans l'eau

Il est conseillé d'utiliser des produits spécifiques pour le nettoyage d'Alcantara®, dont vous trouverez la liste sur le site [www.alcantara.com](http://www.alcantara.com) dans la section entretien. A défaut de produits, il est préférable d'utiliser, selon le cas, de l'eau ou du jus de citron, ou encore de l'alcool éthylique pur (pour liqueurs) et suivre les procédures indiquées ci-dessous. Pour plus d'information, merci de visiter notre site internet [www.alcantara.com](http://www.alcantara.com)

## Macchie solubili in acqua

E' consigliato l'impiego di prodotti specifici per la pulizia di Alcantara®, un elenco dei quali è riportato nel sito [www.alcantara.com](http://www.alcantara.com) nella sezione manutenzione; nel caso non si disponga di questi, è consigliato a secondo dei casi, l'impiego di acqua, oppure succo di limone, oppure alcol etilico puro (da liquori) e seguendo le procedure di seguito indicate. Per maggiori dettagli visita il nostro sito web [www.alcantara.com](http://www.alcantara.com)

Fruchtsäfte, Marmelade, Gelatine, Sirup, Ketchup.	Mit lauwarmem Wasser auswaschen und mit sauberem Wasser ausspülen und abtupfen.
Blut, Eier, Kot und Urin.	Mit kaltem Wasser auswaschen. Warmes Wasser, das diese Substanzen gerinnen lässt, sollte vermieden werden. Mit sauberem Wasser ausspülen und abtupfen.
Liköre, Wein, Bier, Cola und Tee.	Mit lauwarmem Wasser auswaschen. Farbige Flecken sollten mit Zitronensäure behandelt werden. Gut ausspülen.
Kopierstift, Kakao, Schokolade, Creme- und Schokoladensüßigkeiten, Eis, Senf.	Mit lauwarmem Wasser auswaschen. Mit sauberem Wasser ausspülen und abtupfen.
Essig, Haargel, Tomatensoße, gezuckerter Kaffee.	Mit Zitronensäure behandeln und mit lauwarmem Wasser auswaschen. Mit sauberem Wasser ausspülen und abtupfen.

Fruit juice, jam, jelly, syrup, ketchup.	Use lukewarm water, rinse by dabbing with clean water.
Blood, egg, excrement, urine.	Use cold water; avoid warm water because it makes these substances coagulate, rinse by dabbing with clean water.
Liquors, alcoholic beverages, wine, beer, coke and tea.	Use lukewarm water, if the colour mark remains, treat it with lemon juice and then rinse it well.
Copying pencil, cocoa, chocolate, pastry with cream or chocolate, ice-cream, mustard.	Use lukewarm water, rinse by dabbing with clean water.
Vinegar, hair gel, tomato juice, coffee with sugar.	Use lemon juice and then wipe with lukewarm water, rinse by dabbing with clean water.

Jus de fruit, confiture, gélatine, sirop, ketchup.	Utilisez de l'eau à peine tiède; rincez en tamponnant avec de l'eau claire.
Sang, oeuf, selles et urines.	Utilisez de l'eau froide; évitez l'eau chaude qui pourrait faire coaguler ces substances; rincez en tamponnant avec de l'eau propre.
Liqueurs, vin, bière, cola et thé.	Utilisez de l'eau à peine tiède; si la tâche résiste, traitez-la avec du jus de citron et rincez abondamment.
Crayon à encre, cacao, chocolat, gâteaux à la crème et au chocolat, glace, moutarde.	Utilisez de l'eau à peine tiède; rincez en tamponnant avec de l'eau propre.
Vinaigre, gel pour cheveux, sauce tomate, café sucré.	Utilisez du jus de citron puis repassez avec de l'eau à peine tiède; rincez en tamponnant avec de l'eau propre.

Succo di frutta, marmellata, gelatina, sciroppo, ketchup.	Usare acqua appena tiepida; risciacquare tamponando con acqua pulita.
Sangue, uovo, feci e urina.	Usare acqua fredda; evitare l'acqua calda che fa coagulare queste sostanze; risciacquare tamponando con acqua pulita.
Liquori alcolici, vino, birra, coca e the.	Usare acqua appena tiepida; se resta la chiazza di colore trattarla con succo di limone e poi sciacquare bene.
Matita copiativa, cacao, cioccolata, dolci alla crema e al cioccolato, gelato, senape.	Usare acqua appena tiepida; risciacquare tamponando con acqua pulita.
Aceto, gel per capelli, salsa di pomodoro, caffè con zucchero.	Usare succo di limone e poi ripassare con acqua appena tiepida; risciacquare tamponando con acqua pulita.



**Alcantara® Pannel** 41 FARBEN / COLOURS

			5012	5256	
COMPOSITION	ALCANTARA®	POLYESTER	68	68	%
		POLYURETHANE	32	32	%
THICKNESS			0,83	0,85	mm
UNIT WEIGHT		UNI EN 29073-1	230	285	g/m <sup>2</sup>
WIDTH			≥ 142	≥ 142	cm
BREAKING LOAD	lengthwise transversal	UNI EN 29073-3	≥ 220	≥ 220	N
		UNI EN 29073-3	≥ 170	≥ 170	N
WEAR RESISTANCE	martindale	UNI EN ISO 12947-1/2/3/4	≥ 30,000	≥ 30,000	cycles*
			≥ 150,000	≥ 150,000	cycles**
COLOUR FASTNESS					
TO LIGHT	xenotest Beta	VDA 75202 (2 FAKRA)	≥ 3	≥ 3	grey scale
TO RUBBING	dry	UNI EN ISO 105-X12	≥ 4	≥ 4	white scale
	wet	UNI EN ISO 105-X12	≥ 3/4	≥ 3/4	white scale
FR VERSION	fire resistance	FMVSS 302		< 100	mm/min

\* no significant change in surface appearance

\*\* end point

**Alcantara® Pannel** is also available in the version Flame Retardant (FR), comply with the directive 95/28 CE.

**FR product code: 5856**

**Alcantara® Cover** 41 FARBEN / COLOURS

			5205	5267		
COMPOSITION	ALCANTARA®	POLYESTER	68	68	%	
		POLYURETHANE	32	32	%	
		backing	POLYESTER	65	65	%
			COTTON	35	35	%
THICKNESS			≥ 0,95	≥ 0,95	mm	
UNIT WEIGHT		UNI EN 29073-1	≥ 325	≥ 400	g/m <sup>2</sup>	
WIDTH			≥ 142	≥ 142	cm	
BREAKING LOAD	lengthwise transversal	UNI EN 29073-3	≥ 700	≥ 700	N	
			≥ 400	≥ 400	N	
WEAR RESISTANCE	martindale	UNI EN ISO 12947-1/2/3/4	≥ 30.000	≥ 30.000	cycles*	
			≥ 150.000	≥ 150.000	cycles**	
COLOUR FASTNESS						
TO LIGHT	xenotest Beta	VDA 75202 (2 FAKRA)	≥ 3	≥ 3	grey scale	
TO RUBBING	dry	UNI EN ISO 105-X12	≥ 4	≥ 4	white scale	
	wet	UNI EN ISO 105-X12	≥ 3/4	≥ 3/4	white scale	
COHESION		UNI EN ISO 2411	≥ 10	≥ 10	N	
FR VERSION	fire resistance	FMVSS 302		< 100	mm/min	

\* no significant change in surface appearance

\*\* end point

**Alcantara® Cover** is also available in the version Flame Retardant (FR), comply with the directive 95/28 CE.

**FR product code: 5268**



## Alcantara® EXO – 9604 exo SCHWARZ/BLACK

THICKNESS			≤ 1,3	mm
UNIT WEIGHT		EN 29073-1	≥ 310	g/m <sup>2</sup>
WIDTH			≥ 142	cm
DIMENSIONAL STABILITY	water 40°C	EN 25077, EN ISO 6330	≤ 3	%
BREAKING LOAD	lengthwise	EN ISO 29073-3	≥ 600	N/5cm
	crosswise	EN ISO 29073-3	≥ 400	N/5cm
ELONGATION AT 50 N	lengthwise	EN ISO 13934-1	≥ 2,5	%
	crosswise	EN ISO 13934-1	≥ 6	%
TEAR RESISTANCE	lengthwise	EN ISO 13937-3	≥ 30	N
	crosswise	EN ISO 13937-3	≥ 30	N
MARTINDALE ABRASION 12kPa		EN ISO 12947-4	≥ 20.000*	cycles
	end point	EN ISO 12947-2	≥ 150.000	cycles
WATER IMPERMEABILITY		EN 20811	≥ 2	meters H <sub>2</sub> O
WATER VAPOR PERMEABILITY		UNI 4818/26	≥ 300	gr/m <sup>2</sup> day
COHESION		EN ISO 2411	≥ 10	N
RESISTANCE TO PILLING	2000 cycles	EN ISO 12945-2	≥ 4,5	
COLOUR FASTNESS**				
TO LIGHT		EN ISO 105-B02	≥ 7	blue scale (1-8)
		ASTM G154-06	≥ 3,5	grey scale (1-5)
TO RUBBING	dry	EN ISO 105-X12	≥ 4	white scale (1-5)
	wet	EN ISO 105-X12	≥ 3	white scale (1-5)

\* slight change in the appearance of product surface

\*\* shade variations, due to the process technology, are possible on this quality

## Alcantara® Multilayer – 9040 ML SCHWARZ/BLACK

COMPOSITION	ALCANTARA	POLYESTER	71 ± 4	%
		POLYURETHANE	29 ± 4	%
THICKNESS			1,2 ± 0,2	mm
UNIT WEIGHT		EN 29073-1	390 ± 60	g/m <sup>2</sup>
WIDTH			142	cm
BREAKING LOAD	lengthwise	EN ISO 13934-1	600	N/5cm
	crosswise	EN ISO 13934-1	400	N/5cm
TEAR RESISTANCE	lengthwise	EN ISO 13937-3	30	N
	crosswise	EN ISO 13937-3	30	N
MARTINDALE ABRASION 12kPa		EN ISO 12947-4	20.000*	cycles
	end point	EN ISO 12947-2	150.000	cycles
COHESION		EN ISO 2411	12	N
COLOUR FASTNESS**				
TO LIGHT		VDA 75202	3	grey scale (1-5)
TO RUBBING	dry	EN ISO 105-X12	4	white scale (1-5)
	wet	EN ISO 105-X12	3	white scale (1-5)

\* slight change in the appearance of product surface

\*\* shade variations, due to the process technology, are possible on this quality



Hans Reinke  
Handelsgesellschaft mbH

Brandstücken 20      Tel. +49 40 39 1068-0  
22549 Hamburg      Fax +49 40 39 1068-29  
info@hans-reinke.com      www.hans-reinke.com

NETHERLANDS, BELGIUM & LUXEMBOURG



Hans Reinke Benelux B.V.

D'n Oliepint 2      Tel. +31 13 505 6702  
5081 NT Hilvarenbeek      Fax +31 13 505 3073  
Netherlands      info@hans-reinke.nl

SWITZERLAND, AUSTRIA & FRANCE



Jörg & Reinke GmbH

Schärishachen 809d      Tel. +41 34 402 50 05  
CH-3552      Fax +41 34 402 55 53  
Bärau      info@joerg-leder.ch

POLAND



Automotive Textiles

Jakub Ponczyński      Tel. +48 42 288 10 10  
93-490 Łódź      Mob. +48 513 014 610  
Pabianicka 119/131      jakub@ponczynski.com

**ALCANTARA**

Via Mecenate, 86 • 20138 Milano, Italy  
Tel: +39 02 580301 • Fax: +39 02 58030451  
info@alcantara.com • www.alcantara.com

Alcantara®  
is a registered trademark  
of Alcantara S.p.A.